

INSTRUCTION MANUAL

TWO SPEED HYDRAULIC TABLE TRUCK

Model	TF75SD	TF100SD
Load Capacity (kg)	750	1000
Table Size LxW (mm)	1200x610	1200x610
Maximum Height (mm)	1700	1700
Minimum Height (mm)	200	200
Total Length (mm)	1600	1600
Total Width (mm)	1000	1000
Net Weight (kg)	250	250
Packing Dimensions (mm)	1400x620x320	1400x620x320



CART-1500-
D-TS

Model: TF 75SD/100SD

INSTRUCTION MANUAL

TF75SD/TF100SD TWO SPEED HYDRAULIC TABLE TRUCK

1. Brief instruction

I. Use & applicable range

It is a convertible vehicle using for lifting and transporting in workshop, workshop, warehouse and wharf, etc.

2. Basic Data:

Model	TF75SD	TF100SD
Load Capacity (kg)	750	1000
Table Size L×W (mm)	1200×610	1200×610
Maximum Height (mm)	1700	1700
Minmum Height (mm)	500	500
Total Length (mm)	1600	1600
Total Height (mm)	1000	1000
Net Weight (kg)	240	260
Packing Dimensions (mm)	1400×620×520	1400×620×520

3. Installation

- I. Draw out the pin in the foot pedal and put the foot pedal into the foot pedal holder, then use the pin to fix them.
- II. Put the handle on the frame seat and fix it by 4×M10 bolt.
- III. Turn out the discharge bolt, after put the foot pedal board to tighten the bolt.

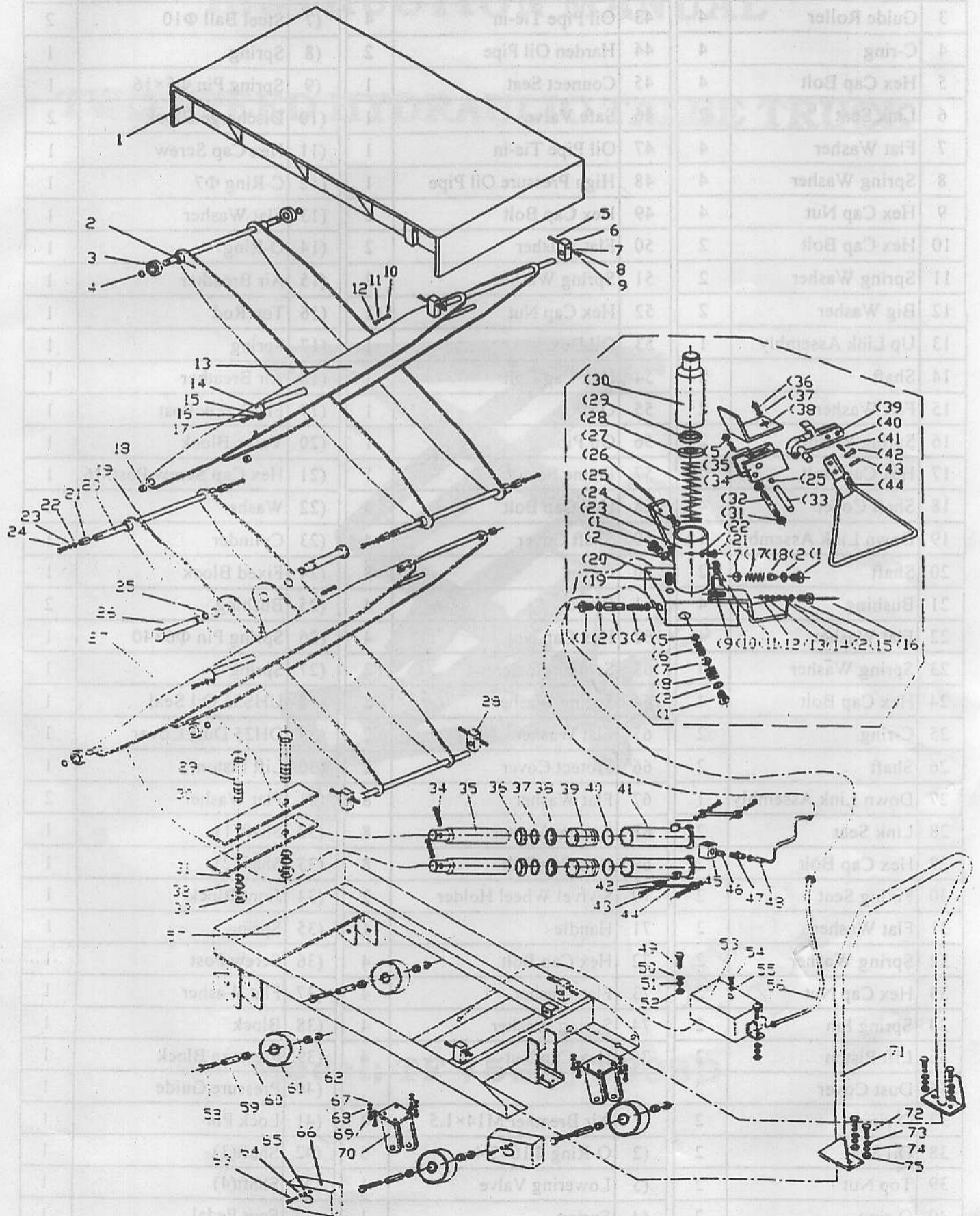
4. Using

- I. Please test the unload cart before using. Step the foot pedal equably by foot to lift the platform to the max height.
- II. Please lock the brake on the wheel before loading.
- III. Please load and unload the goods in the rate capacity of the cart.
- IV. Please step the discharge switch to descend down the cart.

5. Warning!

- ① Read and understand the owner's manual before assembly and operation.
- ② Do not load scissor lift beyond its rated capacity.
- ③ Do not allow people to sit or ride on scissor lift.
- ④ Secure load before raising or moving scissor lift
- ⑤ Do not transport loads in the raised position.
- ⑥ Use only on smooth finished floors.
- ⑦ Pull release lever slowly to allow load to descend in a controlled manner.
- ⑧ Keep hands and feet clear of table when lowering load.
- ⑨ Failure to comply with the above warnings may result in personal injury and/or property damage.

TF75SD/100SD TWO SPEED HYDRAULIC TABLE TRUCK



TF75SD/100SD Two Speed Hydraulic Table Truck

No.	Descriptions	Q'ty	No.	Descriptions	Q'ty	No.	Descriptions	Q'ty
1	Table	1	41	Cylinder	2	(5	Steel Ball $\Phi 8$	2
2	Up Link Assembly	1	42	Oil Seal Sets	8	(6	Spring	1
3	Guide Roller	4	43	Oil Pipe Tie-in	4	(7	Steel Ball $\Phi 10$	2
4	C-ring	4	44	Harden Oil Pipe	2	(8	Spring	1
5	Hex Cap Bolt	4	45	Connect Seat	1	(9	Spring Pin $\Phi 5 \times 16$	1
6	Link Seat	2	46	Safe Valve	1	(10	Discharge Block	2
7	Flat Washer	4	47	Oil Pipe Tie-in	1	(11	Hex Cap Screw	1
8	Spring Washer	4	48	High Pressure Oil Pipe	1	(12	C-Ring $\Phi 7$	1
9	Hex Cap Nut	4	49	Hex Cap Bolt	2	(13	Flat Washer	1
10	Hex Cap Bolt	2	50	Flat Washer	2	(14	O-Ring	1
11	Spring Washer	2	51	Spring Washer	2	(15	Air Breather	1
12	Big Washer	2	52	Hex Cap Nut	2	(16	Top Rod	1
13	Up Link Assembly	1	53	Oil Box	1	(17	Spring	1
14	Shaft	2	54	Hex Cap Bolt	1	(18	Air Breather	1
15	Flat Washer	2	55	O-ring	1	(19	Fix Screw Post	1
16	Spring Washer	2	56	Oil Pipe	1	(20	Valve Block	1
17	Hex Cap Bolt	2	57	Frame Seat	1	(21	Hex Cap Screw Post M6	1
18	Shaft Cover	4	58	Hex Cap Bolt	4	(22	Washer	1
19	Down Link Assembly	1	59	Shaft Cover	4	(23	Cylinder	1
20	Shaft	2	60	Cover	8	(24	Fixed Block	1
21	Bushing	4	61	Wheel	4	(25	Bushing	2
22	Flat Washer	4	62	Hex Cap Nut	4	(26	Spring Pin $\Phi 6 \times 40$	1
23	Spring Washer	4	63	Semicircle Screw	2	(27	Spring	1
24	Hex Cap Bolt	4	64	Spring Washer	2	(28	UHS25 Oil Seal	1
25	C-ring	2	65	Flat Washer	2	(29	DH25 Dust Cover	1
26	Shaft	2	66	Protect Cover	2	(30	Lift Piston	1
27	Down Link Assembly	1	67	Flat Washer	8	(31	Flat Washer	2
28	Link Seat	2	68	Spring Washer	8	(32	Shaft(1)	1
29	Hex Cap Bolt	2	69	Hex Cap Bolt	8	(33	Shaft(2)	1
30	Fixing Seat	2	70	Swivel Wheel Holder	2	(34	Jiont Block	1
31	Flat Washer	2	71	Handle	1	(35	Spring	1
32	Spring Washer	2	72	Hex Cap Bolt	4	(36	Screw Post	1
33	Hex Cap Nut	2	73	Flat Washer	4	(37	Flat Washer	1
34	Spring Pin	2	74	Spring Washer	4	(38	Block	1
35	Lift Piston	2	75	Hex Cap Nut	4	(39	Pressure Block	1
36	Dust Cover	2				(40	Pressure Guide	1
37	O-ring	2	(1	Air Breather M14 \times 1.5	4	(41	Lock Pin	1
38	Oil Seal	2	(2	O-Ring $\Phi 16 \times 2.4$	5	(42	Shaft(3)	1
39	Top Nut	2	(3	Lowering Valve	1	(43	Shaft(4)	1
40	O-ring	2	(4	Spring	1	(44	Foot Pedal	1

Vestil

Quality Assurance and Deviation Inspection Sheet

Cart 400, 650LT, 800D, 1000, 1500

Cart Model	1500
Manufacture Date	2015.07
Inspectors Name	PBN
Inspection Date	2015.07
Empty Tests	
Number strokes up	50
Down Time	17 Seconds
Maximum Height	67.0 Inches
Minimum Height	19.6 Inches
Weight Tests	
Number strokes HS	70
Number of strokes LS	5
Shift Weight	1650 Pounds
Test Weight	1815 Pounds
Down Time	15 Seconds
Leak Test (hold full load for 15min w/out drift down)	<input checked="" type="checkbox"/> YES/NO
Acceptable (Reasons if Not)	<input checked="" type="checkbox"/> YES/NO
Deviations from Norm	

LIMITED WARRANTY

Vestil Manufacturing Corporation ("Vestil") warrants this product to be free of defects in material and workmanship during the warranty period. *Our warranty obligation is to provide a replacement for a defective original part if the part is covered by the warranty, after we receive a proper request from the warrantee (you) for warranty service.*

Who may request service?

Only a warrantee may request service. *You are a warrantee if* you purchased the product from Vestil or from an authorized distributor AND Vestil has been fully paid.

What is an "original part"?

An original part is a part used to make the product as shipped to the warrantee.

What is a "proper request"?

A request for warranty service is proper if Vestil receives: 1) a photocopy of the Customer Invoice that displays the shipping date; AND 2) a written request for warranty service including your name and phone number. Send requests by any of the following methods:

Mail
Vestil Manufacturing Corporation
2999 North Wayne Street, PO Box 507
Angola, IN 46703

Fax
(260) 665-1339
Phone
(260) 665-7586

Email
sales@vestil.com

In the written request, list the parts believed to be defective and include the address where replacements should be delivered.

What is covered under the warranty?

After Vestil receives your request for warranty service, an authorized representative will contact you to determine whether your claim is covered by the warranty. Before providing warranty service, Vestil may require you to send the entire product, or just the defective part or parts, to its facility in Angola, IN. The warranty covers defects in the following *original* dynamic components: motors, hydraulic pumps, electronic controllers, switches and cylinders. It also covers defects in *original* parts that wear under normal usage conditions ("wearing parts"): bearings, hoses, wheels, seals, brushes, batteries, and the battery charger.

How long is the warranty period?

The warranty period for original components is 90 days. The warranty period begins on the date when Vestil ships the product to the warrantee. If the product was purchased from an authorized distributor, the period begins when the distributor ships the product. Vestil may extend the warranty period for products shipped from authorized distributors by *up to* 30 days to account for shipping time.

If a defective part is covered by the warranty, what will Vestil do to correct the problem?

Vestil will provide an appropriate replacement for any *covered* part. An authorized representative of Vestil will contact you to discuss your claim.

What is not covered by the warranty?

1. Labor;
2. Freight;
3. Occurrence of any of the following, which automatically voids the warranty:
 - Product misuse;
 - Negligent operation or repair;
 - Corrosion or use in corrosive environments;
 - Inadequate or improper maintenance;
 - Damage sustained during shipping;
 - Collisions or other incidental contacts causing damage to the product;
 - Unauthorized modifications: DO NOT modify the product IN ANY WAY without first receiving written authorization from Vestil. Modification(s) might make the product unsafe to use or might cause excessive and/or abnormal wear.

Do any other warranties apply to the product?

Vestil Manufacturing Corp. makes no other express warranties. All implied warranties are disclaimed to the extent allowed by law. Any implied warranty not disclaimed is limited in scope to the terms of this Limited Warranty.

