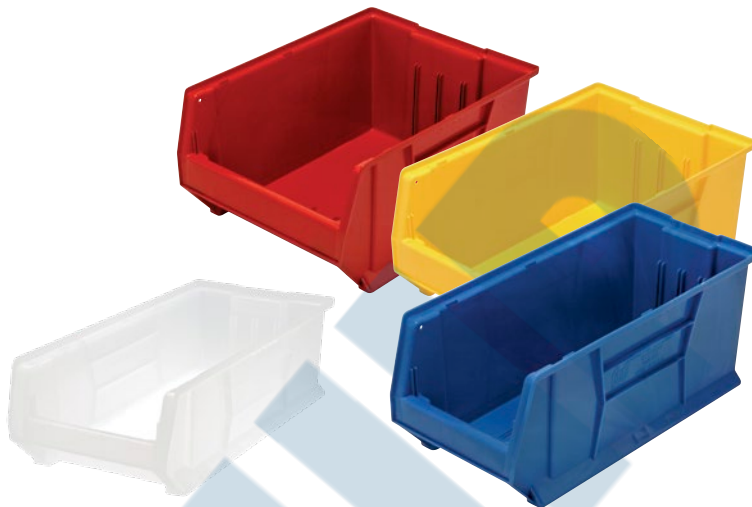




Quantum™ Hulk Containers

- Heavy-duty injection-molded polypropylene stackable containers
- Organize and store your larger bulky items
- Extra large stacking containers offer a generous 2 to 2 1/2' in length to store your larger items
- Ideal for back-to-back use on 48" pallet rack or heavy-duty, extra deep shelving, and are available in a variety of widths and heights
- Heavy-duty front, back and side grips allow for easy handling
- Optional clear plastic window increases bin capacity and provides a quick view of the bin contents
- Optional dividers maximize flexibility and keep contents organized
- Wide stacking ledge and anti-slide lock keep stacked bins steady and prevent forward shifting
- Waterproof bins resist rust and corrosion
- Bins are autoclavable up to 250°F and are resistant to extreme cold
- **Do not hang on louvered panels or rail systems**



Model No.				Mfg. No.	Outside Dim.				Qty	Qty Price /Each	Qty	Qty Price /Each	Dividers	Qty	Qty Price /Each	Windows	Qty	Qty Price /Each
Blue	Red	Yellow	Clear		W"	x	D"	x	H"									
CD545	CD546	CD547	CF525	QUS950	8 1/4	x	23 7/8	x	7				CD563			CD569		
CD548	CD549	CD550	CF526	QUS951	8 1/4	x	23 7/8	x	9				CD564			CD570		
CD551	CD552	CD553	CF527	QUS952	11	x	23 7/8	x	7				CD563			CD571		
CD554	CD555	CD556	CF528	QUS953	11	x	23 7/8	x	10				CD566			CD572		
CD557	CD558	CD559	CF529	QUS954	16 1/2	x	23 7/8	x	11				CD567			CD573		
CD560	CD561	CD562	CF530	QUS955	18 1/4	x	23 7/8	x	12				CD568			CD574		
CF196	CF197	CF198	-	QUS970	8 1/4	x	29 7/8	x	7				-	-	-	CD569		
CF199	CF200	CF201	-	QUS973	11	x	29 7/8	x	10				-	-	-	CD572		
CF202	CF203	CF204	-	QUS974	16 1/2	x	29 7/8	x	11				-	-	-	CD573		
CF205	CF206	CF207	-	QUS975	18 1/4	x	29 7/8	x	12				-	-	-	CD574		
CF208	CF209	CF210	-	QUS976	16 1/2	x	29 7/8	x	15				-	-	-	CF211		

Store More™ Plastic Shelf Bins

- Durable, high density polypropylene bins
- Economical way to store and display parts and components
- Feature a moulded-in label holder and a built-in rear hang-lock which allows bins to tilt out for complete access when on shelving
- A wide hopper front allows complete access to the contents of the bin
- Edges are reinforced for added strength
- Designed for 12", 18" and 24" deep shelf units, racks or standard shelving
- Bins are waterproof, impervious to most chemicals and unaffected by grease or oil



Store more with 6" high shelf bins



Model No.			Mfg. No.	Outside Dim.				Inside Dim.				Qty	Qty Price /Each	Qty	Qty Price /Each	Dividers up to 7/bin	Bin Cups/Bin	
Blue	Yellow	Red		W"	x	D"	x	H"	W"	x	D"	x	H"				CD036	CD041
CF212	CF213	CF214	QSB201	4 1/8	x	11 5/8	x	6	3	x	10 1/6	x	6			CF248	6	2
CF215	CF216	CF217	QSB202	6 5/8	x	11 5/8	x	6	5 1/2	x	10 1/6	x	6			CF249	9	4
CF218	CF219	CF220	QSB207	8 3/8	x	11 5/8	x	6	7 1/8	x	10 1/6	x	6			CF250	12	4
CF221	CF222	CF223	QSB209	11 1/8	x	11 5/8	x	6	10	x	10 1/6	x	6			CF251	18	6
CF224	CF225	CF226	QSB203	4 1/8	x	17 7/8	x	6	3	x	16 1/2	x	6			CF252	9	3
CF227	CF228	CF229	QSB204	6 5/8	x	17 7/8	x	6	5 1/2	x	16 1/2	x	6			CF253	15	6
CF230	CF231	CF232	QSB208	8 3/8	x	17 7/8	x	6	7 1/8	x	16 1/2	x	6			CF254	19	6
CF233	CF234	CF235	QSB210	11 1/8	x	17 7/8	x	6	10	x	16 1/2	x	6			CF255	29	8
CF236	CF237	CF238	QSB205	4 1/8	x	23 5/8	x	6	3	x	22 1/8	x	6			CF256	13	4
CF239	CF240	CF241	QSB206	6 5/8	x	23 5/8	x	6	5 1/2	x	22 1/8	x	6			CF257	21	8
CF242	CF243	CF244	QSB214	8 3/8	x	23 5/8	x	6	7 1/8	x	22 1/8	x	6			CF258	24	8
CF245	CF246	CF247	QSB216	11 1/8	x	23 5/8	x	6	10	x	22 1/8	x	6			CF259	35	16

BIN DIVIDERS

Model No	Qty	Qty Price /Each
CF248		
CF249		
CF250		
CF251		
CF252		
CF253		
CF254		
CF255		
CF256		

BIN DIVIDERS

Model No	Qty	Qty Price /Each
CF257		
CF258		
CF259		

BIN CUPS

Model No	Dimensions	Qty	Qty Price /Each
	W" x D" x H"		
CD036	3 x 13/4 x 3	3	
CD041	5 1/8 x 2 3/4 x 3	3	