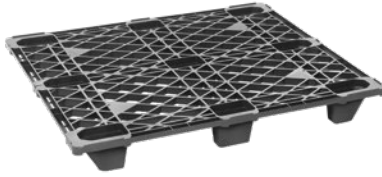




PALLETS

Light Duty Export Pallets

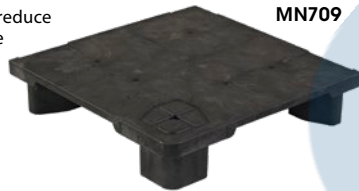
- Low cost lightweight alternative to wood pallets.
- Made of 100% recycled plastics and completely recyclable
- These low cost, single use pallets are designed for export oriented companies.
- Pallets are nestable for easy storing and space saving.
- 4-way entry for both forklift and pallet truck
- Streamlines customs process and reduces shipping delays
- Should only be used and stored in dry environments
- Can't be in contact with any form of liquid (e.g. water)
- ISPM 15 exempt



Model No.	Dimensions				Capacity lbs.		Wt. lbs.	Price /Each
	L"	x	W"	x	H"	Static		
MN457	40	x	48	x	5.2	3500	1500	12.5

Retail Display Pallets

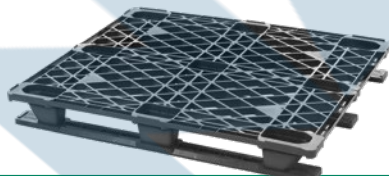
- Modular
- This pallet offers marketers an attractive display solution with efficient material handling
- Easily creates in-aisle or end-of-aisle displays
- The flat, smooth surface allows for easy set up in a warehouse or co-packing facility
- Can be moved directly to sales floor to reduce labor costs and maximize storage space
- Decreases safety liabilities and product shrink by eliminating sharp edges, splinters and nails found in wood alternatives
- Pallet Entry: 4-Way
- ISPM 15 exempt



Model No.	Dimensions				Capacity lbs.		Wt. lbs.	Price /Each
	L"	x	W"	x	H"	Static		
MN709	24	x	24	x	5.5	8000	1000	9
MN713	48	x	24	x	5.5	15 000	2000	19
MN710	48	x	48	x	5.5	20 000	4000	38
MN712	48	x	40	x	5.5	30 000	4000	39.3

Stackable Plastic Pallets

- Economic, environmental and efficient alternative to wood pallets
- Smooth surfaces and lack of sharp edges protect workers from injury
- Nearly 100% of the content is recoverable for use in new pallets
- Produced from recycled material
- ISPM 15 exempt
- Includes runners
- Pallet Entry: 4-Way
- Colour: Black



Model No.	Dimensions				Capacity lbs.		Wt. lbs.	Price /Each
	L"	x	W"	x	H"	Static		
CG031	48	x	40	x	5.6	6500	2300	20

Nestable Single-Faced Pallets

- One piece structural foam pallets are lightweight, nestable and recyclable
- High density polyethylene construction
- Large rectangular legs make it an excellent choice for most conveyor systems
- Stacks 15 high in only 48" for cost effective transport
- Fork lift: 4-ways
- Pallet truck: 4-ways
- Colour: Black
- ISPM 15 exempt



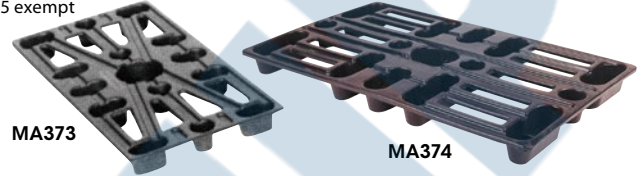
Model No.	Dimensions				Capacity lbs.		Wt. lbs.	Price /Each
	L"	x	W"	x	H"	Static		
CB524	48	x	48	x	5 3/4	30 000	4000	45.5

Plastic Pallets



Sturdy, lightweight pallets with rigid centre supports offer versatile, damage-free storage and movement for a wide range of materials. Suitable for the handling of all materials in paper, plastic or burlap bags; as well as tires, construction materials and items under assembly.

- Injection-molded plastic is easy to clean and resistant to both chemicals and weather
- Nestable (each adds only 5/8" to the height of a stack)
- 1 1/2" deep stringers can also be handled by a standard forklift
- ISPM 15 exempt



Model No.	Deck Size L" x W"	Stringer Height"	Construction	Capacity lbs.		Wt. lbs.	Price /Each
				Static	Dynamic		
MA373	24 x 12	1 1/2	Black Plastic	800		1	
MA374	24 x 15	1 1/2	Black Plastic	800		1 1/4	

Small-Format Pallet

- 30" pallet width provides access through narrow doorways and is easy to manoeuvre
- Designed to optimize the supply chain of small retailers
- Generous clearance for forklifts to de-nest a full stack of pallets
- Added efficiency with molded-in stretch wrap notches in each pallet corner
- Recyclable
- Truckload Quantity (53' trailer): 1,845
- Material: Plastic
- Colour: Black



Model No.	Dimensions				Capacity lbs.		Pallet Entry	Wt. lbs.	Price /Each
	L"	x	W"	x	H"	Static			
CF933	42	x	30	x	6	10 000	2000	4-Way	20

XpressPal® HD Nestable Pallets

- For moving, storing, and distributing product loads within a single warehouse or distribution center, or an entire supply chain
- Structural foam molded
- Recyclable
- Pallet Entry: 4-Way
- Colour: Black



Model No.	Dimensions				Capacity lbs.		Wt. lbs.	Price /Each
	L"	x	W"	x	H"	Static		
CG120	48	x	40	x	5.8	30 000	4000	35

Pallet Dolly

- Fits most standard pallets up to 42" x 48"
- Can be used with loaded or empty pallets
- (4) 6" swivel polyurethane casters, (2) with brakes
- Rugged, angle iron construction with load retention corner brackets
- Capacity: 3000 lbs.
- Width: 48.5"
- Depth: 43"
- Height: 8"

Model No. MP044
Price/Each \$

