



## Plastic Lockers

### A NEW GENERATION OF LOCKERS

- These plastic lockers are maintenance free
- Drain holes make them easy to clean, just hose them down with soap and water
- Durable plastic construction makes them perfect for wet environments: food processing plants, athletic facilities, etc.
- New optional clear door design allows for easy inspection of locker contents

#### Specifications:

- Rust-proof
- No need for painting
- Easy cleaning
- Durable polyethylene construction
- Each unit is fully assembled
- Easy installation
- Space saving design
- Maintenance free

5 units of FH726 & 1 unit of FH728



Engravable aluminum plate



2 units of FC693

Built-in sloped top for extra storage



1 unit of FC695



FH727



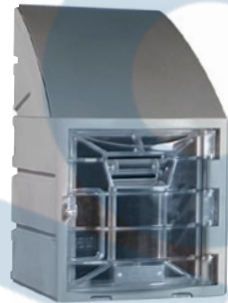
FC689



FC691



FH727



FH728



FH725



FH729

Model No.	Description	Dimensions W" x D"	Door Colour	Hook	Shelf	Top	Wt. lbs.	Price /Each
FH725	12" H locker (usually stacked 6 units high)	12 x 15	Grey	No	No	Flat	6	
FH726	12" H locker (usually stacked 6 units high)	12 x 15	Clear	No	No	Flat	6	
FH727	12" H locker (Sloped top)	12 x 15	Grey	No	No	Slope	8	
FH728	12" H locker (Sloped top)	12 x 15	Clear	No	No	Slope	8	
FC689	18" H locker (usually stacked 4 units high)	15 x 15	Grey	No	No	Flat	10	
FC691	18" H locker (Sloped top)	15 x 15	Grey	No	No	Slope	12	
FC693	36" H locker (usually stacked 2 units high)	12 x 15	Grey	Yes	No	Flat	16	
FH729	36" H locker (Sloped top)	12 x 15	Grey	Yes	No	Slope	21	
FC695	Full size 60" H locker	15 x 18	Grey	Yes	Yes	Slope	42	

**Note:** All dimensions and weight are nominal and may vary due to molding tolerances. Mounting hardware not included. Lockers are individually sold per opening.

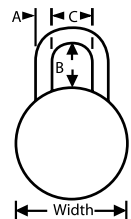
## General Security Combination Padlocks

- Features Blockguard™ anti-shim technology
- Double-reinforced stainless steel case with cold-rolled steel construction shields locking mechanism from physical attack
- Easy 3-number dialing with automatic scrambling feature to prevent reopening of lock
- School standard's in combination padlock
- Hardened steel shackles resists cutting and prying
- Dial automatically locks under shackle tension to prevent "feeling out" the combination and automatically scrambles when closed to prevent accidental opening
- Fits lockers with a padlock eye of at least 5/16" (8 mm) in diameter



SR914

**Master Lock**



Model No.	Mfg. No.	Body Size		Body Material	Shackle Clearance			Shipping Weight (lbs.)	Price /Each
		Width"	Thickness"		A"	B"	C"		
SR914	1500	1 7/8 Dia.	3/4	Stainless Steel	9/32	3/4	13/16	0.50	
SAL506	1500LH	1 7/8 Dia.	3/4	Stainless Steel	9/32	2	13/16	0.50	