



## Heavy-Pressed Steel Casters

- Tread & Tire Hardness: 70° Shore D
- Swivel rig with double ball bearing in the swivel head
- Minimal swivel head play and smooth rolling characteristics
- Medium heavy duty rigs, with top plate fitting
- Low rolling and swivel resistance for smooth running performance
- High chemical resistance to many aggressive substances
- Operating temperature: -15° F to +175° F
- Wheel Material: Steel
- Caster Type: Swivel

**Bolt Hole Spacing:** 3-1/4" x 2-3/8" (83 mm x 60 mm)

**Bolt Hole Size:** 11/32" (8.73 mm)

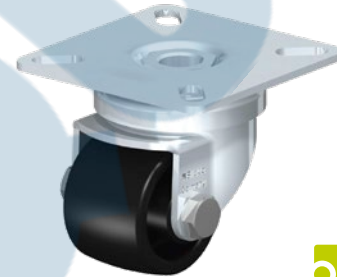
**Plate Size:** 4" x 3-3/8" (102 mm x 86 mm)



Model No.	Wheel Diameter (mm)	Capacity	Tread Width (mm)	Bearing Type	Total Height	Price /Each
M0697	3" (76)	440 lbs. (200 kg.)	1-1/4" (31.8)	Plain Bore	4-3/4"	
M0698	3" (76)	660 lbs. (300 kg.)	1-1/4" (31.8)	Plain Bore	4-3/4"	
M0699	3" (76)	660 lbs. (300 kg.)	1-1/2" (38)	Ball Bearing	4-3/4"	
M0700	3-1/4" (82.5)	660 lbs. (300 kg.)	1-7/16" (37)	Ball Bearing	4-3/4"	
M0701	3-1/4" (82.5)	505 lbs. (230 kg.)	1-7/16" (37)	Plain Bore	4-3/4"	
M0702	4" (102)	505 lbs. (230 kg.)	1-7/16" (37)	Plain Bore	5-5/8"	
M0703	4" (102)	505 lbs. (230 kg.)	1-7/16" (37)	Ball Bearing	5-5/8"	

## Low-Profile Casters

- Swivel rig with double ball bearing in the swivel head
- Minimal swivel head play and smooth rolling characteristics
- Medium heavy duty rigs, with top plate fitting
- Low rolling and swivel resistance for smooth running performance
- High abrasion resistance
- Operating temperature: -15° F to +175° F
- Wheel Material: Nylon
- Caster Type: Swivel
- Frame Material: Steel



Model No.	Wheel Diameter (mm)	Capacity	Tread Width (mm)	Bolt Hole Spacing (mm)	Bolt Hole Size (mm)	Plate Size (mm)	Bearing Type	Total Height	Price /Each
M0716	1-3/8" (35)	165 lbs. (75 kg.)	1" (25.4)	1-1/2" x 1-1/2" (38 x 38) - 1-7/8" x 1-7/8" (48 x 48)	1/4" (6.35)	2-3/8" x 2-3/8" (60 x 60)	Plain Bore	2"	
M0717*	1-3/8" (35)	220 lbs. (100 kg.)	1-1/8" (28.6)	1-1/2" x 1-1/2" (38 x 38) - 1-7/8" x 1-7/8" (48 x 48)	1/4" (6.35)	2-3/8" x 2-3/8" (60 x 60)	Ball Bearing	2"	
M0718	1-3/8" (35)	220 lbs. (100 kg.)	1-1/8" (28.6)	1-1/2" x 1-1/2" (38 x 38) - 1-7/8" x 1-7/8" (48 x 48)	1/4" (6.35)	2-3/8" x 2-3/8" (60 x 60)	Ball Bearing	2"	
M0719	2" (51)	264 lbs. (120 kg.)	1-1/8" (28.6)	3" x 1-7/8" (76 x 48) - 2-3/8" x 2" (60 x 51)	5/16" (7.93)	3-1/2" x 2-1/2" (89 x 64)	Plain Bore	3"	

\*Wheel material: Polyurethane (-15° F to +160° F)

## Wheels

### NYLON

- PO Series, high quality impact resistant wheels
- Temperature Range: -25°C to 80°C (-13°F to 176°F)

### HEAT-RESISTANT

- POHI Series, high quality, impact resistant wheels
- Highly heat-resistant nylon
- Very low rolling and swiveling resistance
- Smooth running performance on even floor
- Very high abrasion resistance, suitable for autoclaves
- Temperature Range: -25°C to 250°C (-13°F to 482°F)

### SOLID RUBBER

- POEV Series, high quality, impact resistant, smooth rolling wheels
- "Blickle Easy Roll" design
- Very high operational comfort, low-noise operation, low rolling resistance
- Very good floor preservation, vulcanized on the wheel centre
- Temperature Range: -25°C to 80°C (-13°F to 176°F)

### THERMOPLASTIC POLYURETHANE

- POTH Series, high quality, high operational comfort, low-noise operation wheels
- Low rolling and swiveling resistance, good floor preservation
- Very high abrasion resistance, chemically bonded for an inseparable connection to the wheel centre
- Temperature Range: -25°C to 70°C (-13°F to 158°F)

Model No.	Mfg. No.	Wheel Dia"	Tread Width"	Bearing Type	Capacity lbs.	Axle Bore"	Hub Length"	Wheel Material	Price /Each
MN742	PO 80/12G	3.15	1.26	Plain	485	0.472	0.472	Nylon	
MN743	PO 100/12G	3.93	1.46	Plain	617	0.472	1.771	Nylon	
MN744	PO125 12G	4.92	1.57	Plain	660	0.590	1.771	Nylon	
MN745	PO 160/20R	6.29	1.97	Roller	992	0.787	2.362	Nylon	
MN755	POHI 81/12G	3.15	1.26	Plain	396	0.472	1.378	Heat-Resistant Nylon	
MN756	POHI 102/12G	3.93	1.50	Plain	550	0.472	1.771	Heat-Resistant Nylon	
MN757	POHI 125/12G	4.92	1.57	Plain	660	0.472	1.771	Heat-Resistant Nylon	
MN746	POEV 80/12R-SB	3.15	1.26	Roller	308	0.472	1.378	Solid Rubber	
MN747	POEV 101/8K-SB-FK	3.93	1.50	Ball	440	0.314	1.811	Solid Rubber	
MN748	POEV 126/8K-SB-FK	4.92	1.57	Ball	550	0.314	1.811	Solid Rubber	
MN749	POEV 160/20R-SB	6.29	1.97	Roller	880	0.787	2.362	Solid Rubber	
MN750	POEV 200/20R-SB	7.87	1.97	Roller	1100	0.787	2.362	Solid Rubber	
MN751	POTH 100/12R	3.93	1.38	Roller	660	0.472	1.771	Thermoplastic Polyurethane	
MN752	POTH 125/12R	4.92	1.57	Roller	770	0.472	1.771	Thermoplastic Polyurethane	
MN753	POTH 160/20R	6.29	1.77	Roller	1212	0.787	2.362	Thermoplastic Polyurethane	
MN754	POTH 200/20R	7.87	1.97	Roller	1760	0.787	2.362	Thermoplastic Polyurethane	

