



Standard Corrugated Vinyl No. 381

THE MOST POPULAR RUNNER MAT!



The all-purpose runner that makes floors safer to walk on!

- Protects floors from foot traffic or special events
- Adds traction where needed
- Reduces cleaning costs
- Flexible, yet durable vinyl compound easily rolls up after use
- Won't curl or shrink during use and is resistant to many chemicals and cleaning fluids
- 1/8" thick
- Colour: Black



WEARWELL™

| Model No. | Dimensions | | | Price /Each |
|-----------|------------|---|-----|-------------|
| | W' | x | L' | |
| SDT956 | 3 | x | 6 | |
| SDT874 | 3 | x | 12 | |
| SDU103 | 4 | x | 6 | |
| NB376 | 4 | x | 105 | |

1-YEAR WARRANTY

Runner Mats

- Fine ribbed rubber runner mats
- Durable rubber mat resists harsh weather conditions
- Easy to clean
- Adds traction to any entrance
- Traffic: Light-Medium
- Thickness: 1/8"
- Colour: Black



| Model No. | Dimensions | | | Price /Each |
|-----------|------------|---|---------|-------------|
| | W' | x | L' | |
| SDL875 | 2 | x | 75 | |
| SDL876 | 3 | x | 75 | |
| SDL877 | 4 | x | 75 | |
| SDL878 | 2 | x | lin.ft. | /lin.ft. |
| SDL879 | 3 | x | lin.ft. | /lin.ft. |
| SDL880 | 4 | x | lin.ft. | /lin.ft. |

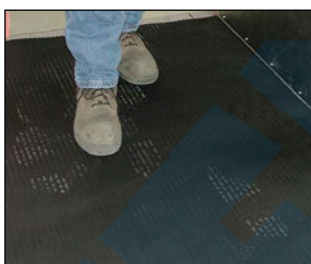
Wide-Ribbed Mats

- Durable rubber mat resists harsh weather conditions
- Easy to clean
- Adds traction to any entrance
- Type: Wiper
- Thickness: 1/8"
- Colour: Black
- Traffic: Light-Medium



| Model No. | Dimensions | | | Price /Each |
|-----------|------------|---|---------|-------------|
| | W' | x | L' | |
| SGG088 | 3 | x | 75 | |
| SGG089 | 3 | x | lin.ft. | /lin.ft. |

1/4" Rubber Runner



- Flexibility in cold weather
- Long wearing, superior abrasion resistance and comfort
- Does not curl up on the edges
- Absorbs noise from hard floor
- 1/4" thick
- Colour: Black

1/8" Rubber Runner



- Flexibility in cold weather
- Long wearing, superior abrasion resistance and comfort
- Does not curl up on the edges
- Absorbs noise from hard floor
- 1/8" thick
- Colour: Black

High resilience for outstanding slip resistance. More effective than vinyl!

Applications: All entrances.

| Model No. | Dimensions | | | Price /Each |
|--------------------|------------|---|---------|-------------|
| | W' | x | L' | |
| WIDE RIBBED | | | | |
| NI364 | 2 | x | lin.ft. | /lin.ft. |
| NI306 | 3 | x | lin.ft. | /lin.ft. |
| NI307 | 4 | x | lin.ft. | /lin.ft. |

| Model No. | Dimensions | | | Price /Each |
|-----------|------------|---|---------|-------------|
| | W' | x | L' | |
| JA686 | 3 | x | lin.ft. | /lin.ft. |