



Flowguard Gold® Pipe Cap

- For hot or cold water applications
- High durability and impact resistant
- Complies with CSA B137.6 and ASTM D2846
- Connection Type: Standard
- Material: CPVC



Model No.	Mfg. No.	Diameter	Price /Each
PUL615	520353	1/2"	
PUL616	520361	3/4"	
PUL617	520379	1"	
PUL618	520387	1-1/4"	
PUL619	520395	1-1/2"	
PUL620	520403	2"	

Flowguard Gold® 90° Street Elbow Fitting

- For hot or cold water applications
- High durability and impact resistant
- Complies with CSA B137.6 and ASTM D2846
- Connection Type: Spigot x Hub
- Material: CPVC



Model No.	Mfg. No.	Diameter	Price /Each
PUL624	520445	1/2"	
PUL625	520452	3/4"	
PUL706	563239	1"	

Flowguard Gold® Coupling

- For hot or cold water applications
- High durability and impact resistant
- Complies with CSA B137.6 and ASTM D2846
- Material: CPVC



Model No.	Mfg. No.	Diameter	Price /Each
PUL594	520114	1/2"	
PUL595	520122	3/4"	
PUL596	520130	3/4" x 1/2"	
PUL599*	520171	3/4" x 3/4"	
PUL597	520155	1"	
PUL604*	520221	1" x 1"	
PUL598	520163	1" x 3/4"	
PUL600	520189	1-1/4"	
PUL601	520197	1-1/2"	
PUL602	520205	2"	

*Converts Iron Pipe Size (IPS) to Copper Tube Size (CPS)

Flowguard Gold® 90° Elbow Fitting

- For hot or cold water applications
- High durability and impact resistant
- Complies with CSA B137.6 and ASTM D2846
- Connection Type: Standard
- Material: CPVC



Model No.	Mfg. No.	Diameter	Price /Each
PUL623	520437	1/2"	
PUL626	520460	3/4"	
PUL628	520486	1"	
PUL630	520502	1-1/2"	
PUL629	520494	1-1/4"	
PUL631	520510	2"	

Flowguard Gold® 45° Street Elbow Fitting

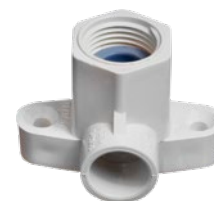
- For hot or cold water applications
- High durability and impact resistant
- Complies with CSA B137.6 and ASTM D2846
- Connection Type: Spigot x Hub
- Material: CPVC



Model No.	Mfg. No.	Diameter	Price /Each
PUL632	520528	1/2"	
PUL633	520536	3/4"	
PUL707	563288	1"	

Flowguard Gold® Drop Ear Elbow Fitting

- Washer included
- For hot or cold water applications
- High durability and impact resistant
- Complies with CSA B137.6 and ASTM D2846
- Connection Type: Hub x FPT
- Material: CPVC



Model No.	Mfg. No.	Diameter	No. of Ears	Price /Each
PUL621	520411	1/2"	3	
PUL622	520429	1/2"	2	

Flowguard Gold® 45° Elbow Fitting

- For hot or cold water applications
- High durability and impact resistant
- Complies with CSA B137.6 and ASTM D2846
- Connection Type: Standard
- Material: CPVC



Model No.	Mfg. No.	Diameter	Price /Each
PUL636	520569	1"	
PUL634	520544	1/2"	
PUL638	520585	1-1/2"	
PUL637	520577	1-1/4"	
PUL639	520593	2"	
PUL635	520551	3/4"	

Pipe Union

- Connection Type: Hub x Hub
- Material: CPVC



Model No.	Mfg. No.	Diameter	Price /Each
PUL655	520817	1/2"	
PUL656	520825	3/4"	
PUL700	522656	1"	