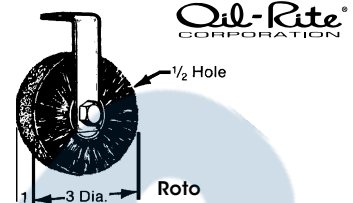
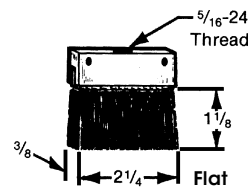




## Flat, Round or Roto Brushes

- Bristles for oil retention and good wear
- Crimped black nylon brushes available for greater wear resistance, longer life and recommended for high speed chains
- Crimped stainless steel brushes can be used for lubricating high temperature chains (above 250°F) as well as for cleaning

Model No.	Bristle Diameter"	Bristle Length"	Material	Price /Each
<b>ROUND BRUSH</b>				
AB034	1/2	3/4	Nylon	
AB035	1/4	3/4	Stainless Steel	
AB251	5/8	1 1/8	Nylon	
AB252	5/8	1 1/8	Stainless Steel	
AB253	1	1 3/4	Nylon	
AB254	1	1 3/4	Stainless Steel	
AB249	1 1/2	1 3/4	Nylon	
AB250	1 1/2	1 3/4	Stainless Steel	



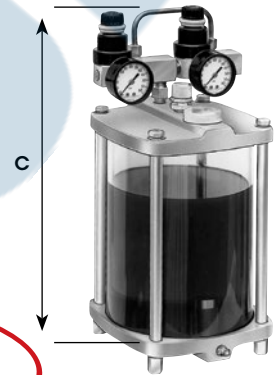
Size"	Material	w/Holder Model No.	Price /Each	Without Holder Model No.	Price /Each
<b>FLAT BRUSH</b>					
2 1/4 x 3/8	Nylon	AB036		AD880	
2 1/4 x 3/8	Stainless Steel	AB037		AD881	
<b>ROTO BRUSH</b>					
3 x 1	Nylon	AB039		AD839	
3 x 1	Stainless Steel	AB040		AD840	

## Air Operated Spray Dispensers

- **Pressure:** 30 PSI maximum
  - **Temperature:** 160°F maximum
  - **Air capacity:** 5 CFM @ 20 PSI
  - **Liquid capacity:** 3 GPH @ 10 PSI
  - **Components:** External mounted
  - **Maximum spray valves:** Four
  - **Reservoir:** Clear acrylic
  - **Seals:** Buna-N
  - **Covers:** Aluminum alloy
- Air operated spray dispensers feed liquid to elevated, distant, or inaccessible points
  - The amount of liquid sprayed is infinitely adjustable from a fine spray, invisible to the eye, to a coarse spray by adjusting the air pressure of the needle valve on the spray nozzle
  - Any liquid that flows can usually be sprayed, up to 1000 SSU viscosity at 100°F
  - For best performance, a second regulator with suitable air capacity is supplied to adjust the air pressure to spray valves
  - Operation can be made automatic with two solenoid valves which can be activated by a motor drive or with a timer, allowing the valves to continually or momentarily apply a film of liquid



Model No.	Capacity	C"	Price/Each
AD848*	1 qt.	8 3/4	
AD849	1/2 gal.	12 1/4	
AD850	1 gal.	17 1/4	
AD851	2 gal.	30 1/4	



The system consists of a central acrylic reservoir which dispenses liquid through one or more spray nozzles.

## Adjustable Air Operated PurgeX® Precision Injector Pumps

- **Pressure:** 40 to 125 PSI
- **Body:** Aluminum Alloy (other materials available)
- **Temperature range:** -15° F to 180° F
- **Seal Materials:** Buna-N and Viton® (other seals available) B 25:1
- **Liquid/Grease delivery per cycle:** 0 to 0.0012 cu. in., adjustable
- **Grease type:** Grade 00, 0, 1, 2
- **Piston dia. and stroke:** 0.125 dia. by 0.100 stroke (inches)
- **Nozzle:** 8" standard (other lengths available)

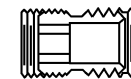
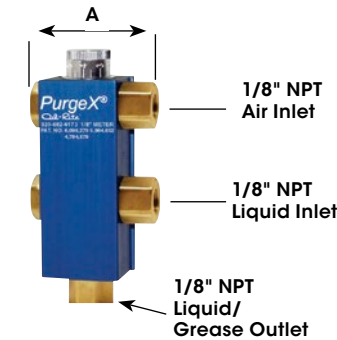
With ultra-fine adjustability, the single piece 1/8" piston allows precise metering of very small volumes of liquid or grease. The patented 1/8" version will help preserve liquid supplies, dispense high cost synthetic lubricants more efficiently and aid in pollution prevention. Industries such as food, medical, printing, chemical, agricultural, plastic, marine, industrial machinery, packaging and conveyors are only a few.

No. of Feeds	A"	Buna-N Seals Model No.	Price /Each	Viton® Seals Model No.	Price /Each
<b>LIQUID OR GREASE DELIVERY</b>					
1	2	AD732		AD750	
2	3 1/4	AD733		AD751	
3	4 1/2	AD734		AD752	
4	5 3/4	AD735		AD753	
5	7	AD736		AD754	
6	8 1/4	AD737		AD755	

<b>LIQUID OR GREASE SPRAY DELIVERY</b>					
1	1 31/32	AD738		AD756	
2	3 7/32	AD739		AD757	
3	4 15/32	AD740		AD758	
4	5 23/32	AD741		AD759	
5	6 31/32	AD742		AD760	
6	8 7/32	AD743		AD761	

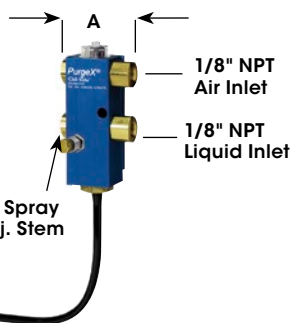
<b>GREASE SPRAY DELIVERY WITH INTEGRATED RESERVOIR</b>					
1	3 7/32	AD744		AD762	
2	4 15/32	AD745		AD763	
3	5 23/32	AD746		AD764	
4	6 31/32	AD747		AD765	
5	8 7/32	AD748		AD766	
6	9 15/32	AD749		AD767	

Liquid or Grease Delivery



Additional PurgeX® pumps can be easily connected with Oil-Rite's Threadapter® Connector.

Liquid or Grease Spray Delivery



Grease Spray Delivery with Integrated Reservoir

