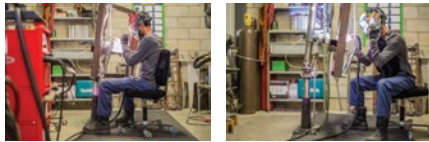




VEGA Welding Grade Ergonomic Chair

- Adjustable seat height and backrest provides optimal back support for users of different sizes
- Provides lower limbs, back and shoulders support
- Colour: Black
- Flame retardant natural cow suede
- Standard Pneumatic Lift: 19" to 24"
- Backrest Dimension: 12" W x 15.5" H
- Seat Dimension: 17.5" W x 16" D
- Overall Dimensions: 25" W x 25" L x 37" H
- Weight Capacity: 300 lbs.
- Five 3" caster wheels that are adaptable to all surfaces

Model No. OP509
Mfg. No. VEGA-IND-MM
Price/Each \$



Synetik
 ErgoDesign



Flex Welding Grade Ergonomic Chairs

- Ergonomic chair that reduces pressure sensations felt in the buttocks, wrists and lumbar region
- Reduces fatigue by limiting muscular effort
- Colour: Black
- Flame retardant natural cow suede
- Standard Pneumatic Lift: 18.5" to 23.5"
- Seat: 15" L x 18" W
- Overall Dimensions: 19" L x 27" W x 21" H
- Weight Capacity: 300 lbs.
- Five 3" caster wheels adaptable to all surfaces

Model No. OP275
Mfg. No. FLEX-MM
Price/Each \$



Synetik
 ErgoDesign

FLEX 2 Welding Grade Ergonomic Chairs

- Ergonomic chair that reduces pressure sensations felt in the buttocks and lumbar region
- Allows users to quickly adjust working position
- Colour: Black
- Upholstery: Flame retardant natural cow suede
- Backrest is adjustable at an angle of 15° to 85° to the ground
- Dimensions of backrest: 17" W x 28" H
- Overall dimensions when backrest is completely lowered: 49" L x 19" W x 14.5" H
- Weight Capacity: 300 lbs.
- Four 3" caster wheels that are adaptable to all surfaces

Model No. OP428
Mfg. No. FLEX2-MM
Price/Each \$



Synetik
 ErgoDesign



TA300 Welding Grade Ergonomic Chair

- Improves comfort while working on elevated surfaces
- The backrest provides support and reduces muscular fatigue and discomfort
- Colour: Black
- Flame retardant natural cow suede
- Standard Pneumatic Lift: 24.5" to 34.5"
- Backrest Dimension: 12.5" W x 10.5" H
- Seat Dimension: 11.5" W x 10.5" D
- Overall Dimensions: 21" L x 16.5" W x 51" H
- Weight Capacity: 300 lbs.

Model No. OP497
Mfg. No. TA300-MM
Price/Each \$



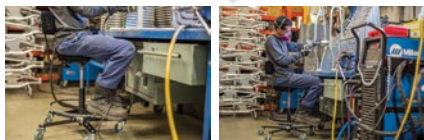
Synetik
 ErgoDesign



TF150 Welding Grade Ergonomic Chair

- Reduces the feeling of pressure by promoting circulation and mobility
- Footrest reduces muscular effort in the lumbar region and in the legs
- Adjustable seat height and backrest provides optimal back support for users of different sizes
- Standard Pneumatic Lift: 19.75" to 27.5"
- Colour: Black
- Flame retardant natural cow suede
- Seat Dimension: 12.5" W x 12" D
- Backrest Dimension: 12" W x 6.5" H
- Overall Dimensions: 28" L x 28" W x 40" H
- Weight Capacity: 300 lbs.
- Five 3" caster wheels that are adaptable to all surfaces

Model No. OP503
Mfg. No. TF150-IND-MM
Price/Each \$



Synetik
 ErgoDesign



TA180 Welding Grade Ergonomic Stools

- Ergonomic stool that improves user comfort and reduces foot and leg pain due to prolonged standing
- Ideal for users that need freedom of movement
- Colour: Black
- Base is equipped with non-skid pads
- Dual-density cushions and closed-cell foam padding
- Standard Pneumatic Lift: 26.75" to 36.75"
- Seat: 10" L x 12" W
- Overall Dimensions: 16" L x 22" W x 27" H
- Weight Capacity: 300 lbs.

Model No. OP277
Mfg. No. TA180-MM
Price/Each \$

Synetik
 ErgoDesign

